

# ALTRINCHAM COLLEGE **SIXTH FORM**



Altrincham College  
**Sixth Form**

## **COURSE GUIDE**

FOR 2023 ENTRY

ASPIRE, ACHIEVE, AMAZE

# Courses for September 2023

## A Level Courses

## Page number

Biology.....	3
Business .....	4
Chemistry.....	5
Computer Science.....	6
Drama & Theatre.....	7
English Language.....	8
English Literature.....	9
English Language and English Literature (combined).....	10
French.....	11
Geography.....	12
History.....	13
Law.....	14
Maths.....	15
Advanced Maths (Core).....	16
Media Studies.....	17
Physical Education.....	18
Physics.....	19
Politics.....	20
Psychology.....	21
Religious Studies.....	22
Sociology.....	23

## BTEC Diploma (2 A Levels)

Art & Design (Fashion and Clothing).....	24
--	----

## OCR Certificate (1 A Level)

Business.....	25
Sport & Physical Activity.....	26

## BTEC Extended Certificate (1 A Level)

Art & Design.....	27
Music Performance.....	28

# A LEVEL BIOLOGY

**LEVEL** 3  
**SUBJECT TITLE** BIOLOGY  
**AWARDING BODY** EDEXCEL  
**COURSE CODE** 601/5299/0

**Contact:** Miss Brickland  
**Email:** [sbd1@altrinhamcollege.com](mailto:sbd1@altrinhamcollege.com)

## ENTRY REQUIREMENTS

Five GCSEs at grades 9-5 including English Language and Maths.

Minimum grades of 6 in Maths GCSE, grade 6 in Biology GCSE, or grade 6 in Combined Science GCSEs.

## COURSE CONTENT

Students will study eight core topics: 1 - Lifestyle, Health and Risk, 2 - Genes and Health, 3 - Voice of the Genome, 4 - Biodiversity and Natural Resources, 5 - On the Wild Side, 6 - Immunity, Infection and Forensics, 7 - Run for your Life, 8 - Grey Matter

## LEARNING METHODS AND ASSESSMENT

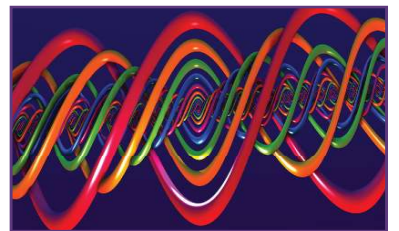
All units are assessed through examinations. Exams will take place in the June of Year 13. There will be a mix of structured and short-answer questions which draw on the student's experience of planning and completing core practical activities as well as on their in-depth knowledge of biological principles. Students will need to interpret and explain experimental results and be aware of ethical issues in Biology.

Topics 1-6 will be examined in Paper 1, Topics 1-4, 7 and 8 will be examined in Paper 2, and Paper 3 will focus on General and Practical Applications in Biology. Each paper will account for 33.33% of the total qualification.

## PRACTICAL, RESEARCH AND INVESTIGATIVE SKILLS:

Students complete 18 core practical assignments which will be assessed in the examinations, particularly in Paper 3. Students will need to work safely, produce valid results and learn to present and evaluate data appropriately.

Year 13 practical activities will provide evidence for the Science Practical Endorsement which requires competence to be shown in a list of key biological techniques. The Science Practical Endorsement will be assessed as a Pass or Fail. While not contributing to the qualification grade, the result will appear on the student's exam certificate.



## CAREER OPPORTUNITIES

This qualification is an excellent foundation for progression in Biological Sciences and related courses at University and a basis for careers in Health-related Professions, in Laboratory and Environmental Science and in Teaching.

# A LEVEL BUSINESS

**LEVEL** 3  
**SUBJECT TITLE** BUSINESS  
**AWARDING BODY** EDEXCEL  
**COURSE CODE** 601/4673/4

**Contact: Mr Mahmood**  
**Email: amd@altrinhamcollege.com**

## ENTRY REQUIREMENTS

Five GCSEs at grades 9-5 including English Language and Maths.  
Grade 6 in GCSE Business or equivalent.

## COURSE CONTENT

During the course you will: gain a broad understanding of business, exploring some aspects in depth; have an opportunity to apply learning in a practical way and gain confidence through developing independent learning skills.

## COURSE CONTENT

A Level Business will equip you with the technical skills, knowledge and understanding to prepare you for a professional career in business.

## LEARNING METHODS AND ASSESSMENT

The A Level course will comprise of **four** themed units and **three** externally assessed examination papers:

### *Year 12 will cover:*

Theme One – Marketing and People  
Theme Two – Managing Business Activities

### *Year 13 will cover:*

Theme Three – Business decisions and strategy  
Theme Four – Global Business

Students will sit the following examinations at the end of Year 13: Unit 1 exam – ‘Marketing, people and global business’, Unit 2 exam – ‘Business activities, decisions and strategies’, Unit 3 exam – ‘Investigating business in a competitive environment’



## CAREER OPPORTUNITIES

The broad nature of the subject makes it a useful foundation for many degrees. Along with the transferable skills of high level literacy, numeracy, reporting skills, an ability to use data, well-developed skills in ICT, and a problem-solving mentality make business students highly employable graduates. Many go on to careers in Finance, Marketing and Management, Law and Accountancy. Employers rate the skills of business students very highly, which can help secure a wide range of jobs.

# A LEVEL CHEMISTRY

LEVEL 3  
SUBJECT TITLE CHEMISTRY  
AWARDING BODY AQA  
COURSE CODE 601/5731/8

Contact: Miss Brickland  
Email: [sbd1@altrinchemcollege.com](mailto:sbd1@altrinchemcollege.com)

## ENTRY REQUIREMENTS

Five GCSEs at grades 9-5 including English Language and Maths.

Minimum grades of 6 in Maths GCSE, grade 6 in Chemistry GCSE, or grade 6 in Combined Science GCSEs.

## COURSE CONTENT

Students will study aspects of Chemistry that are often in the media and affect their lives. You will develop knowledge and understanding to explain many different aspects of contemporary chemistry, including climate change, green chemistry, pharmaceuticals and chemistry research.

## COURSE CONTENT

Students of A Level Chemistry will leave the course with the ability to recognise, recall and show understanding of specific chemical facts, terminology, principles and concepts and with well-developed practical ability. You will use information with the view of interpreting phenomena and effects of chemical principles, as well as presenting arguments and ideas in a logical, clear manner.

## LEARNING METHODS AND ASSESSMENT

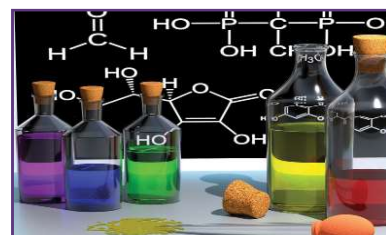
Students will take three examinations for the A Level at the end of year 13:

**Paper 1:** Physical chemistry, inorganic chemistry and relevant practical skills (105 marks) (2 hours)

**Paper 2:** Physical chemistry, organic chemistry and relevant practical skills (105 marks) (2 hours)

**Paper 3:** Any content, any practical skills (90 marks) (2 hours).

Papers 1 and 2 consist of short and long answer questions. Paper 3 will include practical techniques and data analysis (40 marks), questions testing knowledge across the specification (20 marks) and 30 multiple choice questions.



## CAREER OPPORTUNITIES

Potential areas of study and employment include: medicine, pharmacy, veterinary science, chemistry, biochemistry, food science/nutrition, forensic science, biological/engineering careers, optical management, optometry, microbiology, natural sciences, pharmacology, software engineering and physiology.

# A LEVEL COMPUTER SCIENCE

**LEVEL** 3  
**SUBJECT TITLE** **COMPUTER SCIENCE**  
**AWARDING BODY** **OCR**  
**COURSE CODE** **601/4911/5**

**Contact: Mr McWatt**  
**Email: [mmt@altrinchamcollege.com](mailto:mmt@altrinchamcollege.com)**

## ENTRY REQUIREMENTS

Five GCSEs at grades 9-5 including English Language, Maths & ICT.

Prior study of Computer Science at GCSE (minimum grade 5 would be an advantage but is not essential).

## COURSE CONTENT

This specification promotes the integrated study of Computer Science. It will enable learners to develop a broad range of skills and an understanding of the fundamental principles and concepts of computer science, including abstraction, decomposition, logic, algorithms and data representation.

## COURSE CONTENT

The subject content for A-Level Computer Science will be assessed across 3 components:

### **Component 1 – Computer Systems**

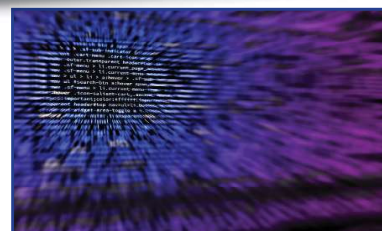
Written examination: 2 hours 30 minutes (40% of qualification)

### **Component 2 - Computer Architecture, Data, Communication and Applications**

Written examination: 2 hours 30 minutes (40% of qualification)

### **Component 3 - Programming project**

Non-exam assessment (20% of qualification). You will investigate: design, prototype, refine the design, implement, test and evaluate a computer solution to a substantial problem of your own choice.



## LEARNING METHODS AND ASSESSMENT

This specification will enable learners to develop a broad range of skills in the areas of programming, system development, computer architecture, data, communication and applications, as well as the ability to analyse problems in computational terms through practical experience of solving problems, including writing programs. The subject content for A-Level is assessed across 2 years, comprising of 2 theory components and 1 practical. This is a linear qualification in which all assessments will be taken at the end of Year 13.

## CAREER OPPORTUNITIES

Students can use this qualification to progress to University to study an undergraduate degree or gain entry to other professional development programmes.

# A LEVEL DRAMA & THEATRE

**LEVEL** 3  
**SUBJECT TITLE** DRAMA & THEATRE  
**AWARDING BODY** EDEXCEL  
**COURSE CODE** 601/8302/0

**Contact:** Mrs Mrozinski  
**Email:** [mmi@altrinhamcollege.com](mailto:mmi@altrinhamcollege.com)

## ENTRY REQUIREMENTS

Five GCSEs at grades 9-5 including English Language and Maths.  
Grade 6 in Drama is preferred and/or evidence of an interest in drama and performing.

## COURSE CONTENT

Three components including performance (both of original and published work), study of set texts, theatre production and review of live theatre.

## COURSE CONTENT

**Component 1: Devising:** Students will devise an original performance piece using one key extract from a performance text and a theatre practitioner as stimuli.

**Component 2: Text in Performance:** Students will work in groups and stage a production of a published play in front of an audience; this will be assessed by an external examiner. Students will also be required to perform a monologue or duologue from a different play.

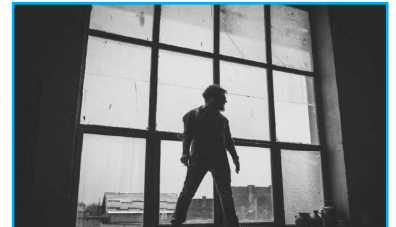
**Component 3: Theatre Makers in Practice:** Students will study two set texts, one focus is on how this can be realised in performance, the other is in light of a theatre practitioner and how this could be re-imagined for a contemporary audience. Students will also be required to review a live performance.

## LEARNING METHODS AND ASSESSMENT

**Component 1** – 40 % internally assessed and externally moderated. There are two parts to the assessment: a portfolio and the devised performance.

**Component 2** – 20% Externally Assessed. For the first part students perform a monologue or duologue, for the second part students will contribute to a performance by a professionally published play by a known writer

**Component 3** – 40% Written Examination. The exam is divided into three sections: evaluation of a live performance, two extended response questions based on a unseen extract from the performance text studied and one extended response question on the second set text studied.



## CAREER OPPORTUNITIES

A Level Drama is essential to pursue any form of Drama course at University or at Drama school. The skills gained during the course will be invaluable for any employment where people-skills and time-management are required.

# A LEVEL ENGLISH LANGUAGE

**LEVEL** 3  
**SUBJECT TITLE** ENGLISH LANGUAGE  
**AWARDING BODY** AQA  
**COURSE CODE** 601/46400

**Contact:** Mrs Beatty  
**Email:** [nsr@altrinchamcollege.com](mailto:nsr@altrinchamcollege.com)

## ENTRY REQUIREMENTS

Five GCSEs at grades 9-5 including English Literature and Maths. Grade 6 or above in English Language.

## COURSE CONTENT

This is a two year course which is assessed at the end of the course through two examinations and two pieces of coursework.

Paper 1 - Language, The Individual and Society,  
Paper 2 - Language Diversity and Change, Non-exam assessment: Language in Action

## COURSE CONTENT

**Language, The Individual and Society:** Textual variations and representations; Children's language development (0-11 years); Methods of language analysis are integrated into the activities. Students will study two texts and analyse how language variations are used, and write an essay on language development.

**Language Diversity and Change:** Language diversity and change; Language discourses; Writing skills; Methods of language analysis are integrated into the activities. Students will write three essays on the examination paper: one on either language change or language diversity; one responding to texts provided and one piece of directed writing showing language change in action.

**Language in Action :** Language Investigation; Original Writing. Students are required to produce a language investigation (2,000 words excluding data) and a piece of original writing and commentary (1,500 words total).



## LEARNING METHODS AND ASSESSMENT

- Papers 1 and 2 will be externally assessed through examinations. Each exam will constitute 40% of the total marks for the A- Level, making a total of 80%.
- Non-exam assessment: this coursework piece will be internally assessed and externally moderated and will constitute 20% of the total marks for the A-Level.

In order to prepare for the units, students will analyse and write a broad range of texts covering various purposes and intended audiences.

## CAREER OPPORTUNITIES

An English Language A-Level is highly regarded by Universities, providing a solid grounding for continued study at degree level. Degree programmes in English Language or Literature, Creative Writing, History, Politics, Journalism, and Media & Communications are all possible routes into Higher Education.



# A LEVEL ENGLISH LITERATURE

**LEVEL** 3  
**SUBJECT TITLE** ENGLISH LITERATURE  
**AWARDING BODY** AQA  
**COURSE CODE** 601/5328/3

**Contact:** Mrs Beatty  
**Email:** [nsr@altrinchamcollege.com](mailto:nsr@altrinchamcollege.com)

## ENTRY REQUIREMENTS

Five GCSEs at grades 9-5 including English Language and Maths.  
Grade 6 in English Literature.

## COURSE CONTENT

The A-Level consists of two units, studying six texts in total, plus two extended essays as coursework (one prose and one poetry).

## COURSE CONTENT

**Unit 1 - Literary Genres (Aspects of Tragedy).** A study of 3 texts from a list of 8, including 2 drama texts. Looking at texts such as "Othello", "The Great Gatsby" and "Death of a Salesman" students will explore a range of elements which contribute to the popularity and ever-changing nature of what constitutes a tragedy.

**Unit 2 - Texts and Genres (Elements of Crime Writing).** A study of 3 texts from a list of 8. By tracing the growth of crime fiction from the mid-19th century to the present day, students will explore how writers structure their works in order to focus on the breaking of national, social, religious or moral laws. Possible texts for study include "Brighton Rock", "Atonement" and "When Will There Be Good News".

**Non-examined Assessment** – two extended essays, based on one prose and one poetry text linked to literary theories.

## LEARNING METHODS AND ASSESSMENT

- Unit 1 – a two hour written exam, closed book (worth 40% of A Level)
- Unit 2 – a three hour written exam, comprised of two open book sections and one unseen passage (worth 40% of A Level)
- Non-Examined Assessment - study of one prose and one poetry text, informed by a choice of critical readings from six possibilities, including those centred on Marx, feminism and the canon. Two essays of 1,250-1500 words each (worth 20% of the A Level)
- All examinations will be taken at the end of Year 13

## CAREER OPPORTUNITIES

English Literature is a highly-regarded qualification because it includes the essential skills of constructing and presenting an argument, reading widely, quickly and being able to synthesise information. These transferable skills are vitally important in any form of employment and at University.



# A LEVEL ENGLISH LANGUAGE AND LITERATURE COMBINED

**LEVEL** 3  
**SUBJECT TITLE** ENGLISH LANGUAGE AND LITERATURE  
**AWARDING BODY** AQA  
**COURSE CODE** 601/4641/2

**Contact:** Mrs Beatty  
**Email:** [nsr@altrininchamcollege.com](mailto:nsr@altrininchamcollege.com)

## ENTRY REQUIREMENTS

Five GCSEs at grades 9-5 including English Language and Maths.

Grade 6 in English Literature and English Language.

## COURSE CONTENT

This is a two year course which is assessed at the end of the course through two examinations and one piece of coursework.

Paper 1 - Telling Stories, Paper 2 - Exploring Conflict  
Non-exam Assessment: Making Connections

## COURSE CONTENT

The qualification builds upon knowledge, understanding and skills developed in GCSE English and English Literature; it foregrounds an integrated linguistic and literary approach when reading and interpreting texts.

The course encourages students to engage creatively and independently with a range of spoken, written and multimodal texts. However, English Language and Literature is not solely concerned with analysis, it also includes a component wherein students can write creatively and then reflect critically upon their invention. By studying English Language and Literature, students will consistently develop skills as producers and interpreters of language.

## LEARNING METHODS AND ASSESSMENT

Paper 1: Telling Stories, 40% • Written exam, 3 hours

Paper 2: Exploring Conflict, 40% • Written exam, 2 hours, 30 minutes

Non-exam Assessment: Making Connections, 20% • Internal written coursework, investigation on a chosen theme and texts



## CAREER OPPORTUNITIES

The course develops creative and analytical skills, but it also enhances the ability to communicate, promote opinions and respond to the ideas of others - skills which are needed in most professions. This highly-esteemed course enables students to study English at a higher level (completing Language or Literature Degrees).

Alternatively, you may use this course to support a different career path, for example, teaching or law. During the creative element of the course, students will learn to express their ideas and reflect upon their intentions and outcomes and as such it is excellent preparation for Undergraduate Degrees in Creative Writing or Journalism too. This course provides an excellent grounding for careers in journalism, Advertising and Marketing, Human Resources, Film, TV and Radio or Publishing.

# A LEVEL FRENCH

**LEVEL** 3  
**SUBJECT TITLE** FRENCH  
**AWARDING BODY** AQA  
**COURSE CODE** 601/8727/X

**Contact:** Mrs Casey  
**Email:** ccy@altrinhamcollege.com

## ENTRY REQUIREMENTS

Five GCSEs at grades 9-5 including English Language and Maths.

Grade 6 or above in GCSE French.

## COURSE CONTENT

Over two years students will cover the following topics:

- Social issues and trends
- Political and artistic culture
- Grammar
- Works: Literary texts and films
- Individual Research Project (see below)

## INDIVIDUAL RESEARCH PROJECT

Students must also identify a subject or a key question which is of interest to them and which relates to a country or countries where French is spoken. They must select relevant information in French from a range of sources including the internet. The aim of the research project is to develop research skills.

## LEARNING METHODS AND ASSESSMENT

Students will be assessed at the end of Year 13 in the following ways:

**Paper 1** - Written exam: 2 hours 30 minutes (Listening, reading and writing) - 50% of A Level

**Paper 2** - Written exam: 2 hours - 20% of A Level

**Paper 3** - Speaking exam: 21-23 minutes - 30% of A Level

**All students will have examinations at the end of Year 12 to benchmark progress.**



## EXPECTATIONS OF STUDENTS

Students are expected to participate fully in lessons in order to practise all four skill areas. They are also required to work independently, researching new topics and french vocabulary. In addition to lessons and work in school, a substantial amount of work must be completed outside the classroom.

Students must keep up to date on world affairs, especially those in french speaking countries, by accessing online French news and radio on a weekly basis.

## CAREER OPPORTUNITIES

Learning French is hugely rewarding, offering students the chance to travel and become familiar with cultures very different to thier own. French also offers huge career benefits in areas such as Law, Accountancy, Catering, Tourism, Teaching and many others. Many UK based companies are now very aware of the need to be able to communicate in worldwide markets where English is not the first language.

# A LEVEL GEOGRAPHY

**LEVEL** 3  
**SUBJECT TITLE** GEOGRAPHY  
**AWARDING BODY** WJEC/EDUQAS  
**COURSE CODE** 601/8847/9

**Contact: Mr Kevan**  
**Email: [jkn@altrinhamcollege.com](mailto:jkn@altrinhamcollege.com)**

## ENTRY REQUIREMENTS

Five GCSEs at grades 9-5 including English Language and Maths.  
Grade 6 or above in GCSE Geography.

## COURSE CONTENT

At A-Level there are four course elements, examined through structured data response questions and extended essay questions.

## COURSE CONTENT

**Component 1: SECTION A** - Changing Landscapes. In this section there is a choice between either coastal or glaciated landscapes.

**SECTION B**- Changing Places. This section focuses on physical and human geography and the inter-relationships between people and environment.

**Component 2: Global systems and Governance:** The Water/Carbon Cycle; Global Systems and Global Governance .

**Component 3: Contemporary Themes in Geography: Section A:** Tectonic Hazards. **Section B:** Four optional themes of which two are studied.

**Component 4: Independent Investigation**

**Please note that Fieldwork and personal research are an essential part of the A-Level course.**

## LEARNING METHODS AND ASSESSMENT

The A-Level is assessed through structured questions with data response, demanding both extended writing and more open-ended essays. Students will need to be able to critically analyse issues, evaluate outcomes and have the ability to interpret data, maps and graphs, and so a good standard of mathematical ability will help.

Fieldwork will develop students' understanding of the key concepts and processes and promote independent research skills. The fieldwork element of the course will be assessed by the learner's own independent investigation.

This course specification builds on the knowledge, understanding and skills established at GCSE and particularly aims to develop a deeper understanding of, and ability to apply, the concepts of place, space, scale and environment.



## CAREER OPPORTUNITIES

The broad nature of the subject makes it a useful foundation for many degrees. Combined with this, the transferable skills of a high level of literacy, numeracy, reporting skills, an ability to collect data, well-developed skills in ICT and a problem-solving mentality make Geographers highly employable graduates. Many go on to jobs in Finance, Marketing and Management, with other careers including Surveying, Environmental Management, Consultancy and Journalism.

# A LEVEL HISTORY

**LEVEL** 3  
**SUBJECT TITLE** HISTORY  
**AWARDING BODY** OCR  
**COURSE CODE** 601/4701/5

**Contact: Mr Gillan**  
**Email: [jgn@altrinchamcollege.com](mailto:jgn@altrinchamcollege.com)**

## ENTRY REQUIREMENTS

Five GCSEs at grades 9-5 including English Language and Maths.  
Grade 6 or above in GCSE History.

## COURSE CONTENT

Students cover four units, two in each year of study.

## COURSE CONTENT

### Year 12:

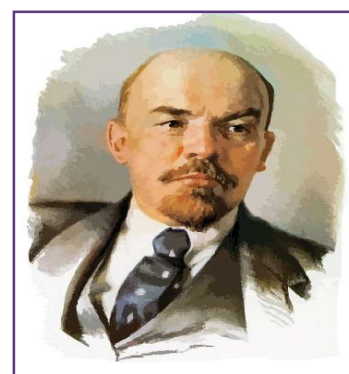
**Unit 1** - The mid-Tudor crisis (1547-1558) and The Reign of Elizabeth I (1558-1603): students study the contrasting reigns of Edward and Mary to consider the stability of the English monarchy at this time. This is followed by an in-depth study of the reign of Elizabeth I which focuses on the issues of religion, the threat posed by Catholic Spain, a woman in power and why she resisted the pressure to marry.

**Unit 2** - Democracy and Dictatorships in Germany, 1919-1963: a study of the establishment, development and policies of both the Weimar Republic (1919-33) and the Nazi dictatorship (1933-45). You will also study the impact of Germany's defeat in the Second World War and the creation of a divided Germany.

### Year 13:

**Unit 3** - Russia and its Rulers 1865-1964: students study a thematic module that covers a broad range of Russian history. They will study Russia under both imperial government and communist rule. Themes that will be covered include; war, terror and repression, the nature of government, opposition, living conditions and the economy. We will study a wide range of key events and how they affected Russia, including the World Wars and Cold War, as well as the revolutions of 1917 and Stalinist terror. Throughout this unit, students will engage with the work of academic historians as well as discussing and debating the nature of change in Russia over the 100 year time period.

**Unit 4** - Personal Study: Students choose their own significant event or individual in history and produce a Personal study of 3000-4000 words.



## LEARNING METHODS AND ASSESSMENT

Linear A Levels are externally assessed courses with examinations covering all units sat at the end of Year 13.

A-Level students are examined on Unit 1, 2, 3 and 4.

Unit 1 is worth 25% , Unit 2 is worth 15% , Unit 3 is worth 40% , Unit 4 is worth 20%

## CAREER OPPORTUNITIES

Students will develop a range of transferable skills including the ability to analyse, debate, create a strong argument and communicate effectively. A well trained historian can process facts, arguments and viewpoints and build up strong points of view. Employers rate the skills of a historian very highly and history students find employment in a wide range of jobs including Research, Journalism and the Media, Management, Public Relations and Law.

# A LEVEL LAW

**LEVEL** 3  
**SUBJECT TITLE** LAW  
**AWARDING BODY** OCR  
**COURSE CODE** 603/0706/7

**Contact:** Mrs Khan  
**Email:** [ikn@altrinchamcollege.com](mailto:ikn@altrinchamcollege.com)

## ENTRY REQUIREMENTS

Five GCSEs at grades 9-5 including English Language and Maths.  
Grade 6 in GCSE English Literature, History and/or R.E. is essential.

## COURSE CONTENT

This A Level provides students with the opportunity to study a range of topics covering the legal system; law making; the nature of law; and three substantive areas of law.

## COURSE CONTENT

The A-Level qualification consists of three exam papers, each 2 hours long and each worth 1/3 of the marks.

**Paper one** – The Legal System (including courts, personnel and sentencing) and Criminal Law (including murder, manslaughter, defences, non-fatal offences and offences against property)

**Paper two** – Law Making (including parliamentary law making, judicial law making and delegated legislation) and the Law of Tort (including negligence, occupiers' liability and remedies)

**Paper three** – The Nature of Law (including concepts of justice, law and morality) and Contract Law (including formation of a contract, terms of a contract and remedies)

In the final year of study, Law students are assessed on their ability to define the legal concepts; analyse the key legal issues and apply legal rules to problems.

## LEARNING METHODS AND ASSESSMENT

A range of teaching and learning activities are utilised with emphasis on independent learning. The A-Level is assessed through structured questions including descriptive, evaluative and problem-solving. Students will be involved in class discussions, problem solving and individual research; they are provided with detailed study packs and a class text book and given regular assessments and guidance to help them monitor their own performance. A-Level Law helps students develop a range of transferable skills: analytical skills, attention to detail, logical thinking, research skills, essay writing skills and the ability to produce a balanced argument. Students are given the opportunity to visit the Crown Court, Parliament and the Supreme Court. They will meet different legal professionals and attend conferences to provide them with insight into the UK legal system.



## CAREER OPPORTUNITIES

The A-Level gives an excellent introduction for students who want to study Law at University or start a legal apprenticeship. The broad nature of the subject makes it a useful foundation for many degrees. Students have gone on to study a range of subjects at University including Law, Criminology, History, Psychology, Business Studies, ICT and Accounting. Many students progress on to jobs in the Legal Profession, Business, Accounting and the Police.

# A LEVEL MATHS

**LEVEL** 3  
**SUBJECT TITLE** MATHEMATICS  
**AWARDING BODY** AQA  
**COURSE CODE** 603/1164/2

**Contact:** Miss Whitworth  
**Email:** [lwh@altrinchamcollege.com](mailto:lwh@altrinchamcollege.com)

## ENTRY REQUIREMENTS

Five GCSEs at grades 9-5 including English Language and Maths.

Minimum of a Grade 7 in Maths GCSE is required.

## COURSE CONTENT

The topics covered are a mixture of Pure/Core Mathematics (75% of course content), Statistics (12.5% of course content) and Mechanics (12.5% of course content).

## COURSE CONTENT

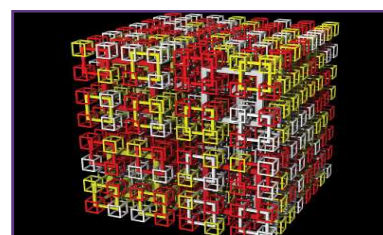
Students learn the skills of mathematical argument, logic and proof, mathematical problem solving and mathematical modelling by studying the following topics: proof, algebra and functions, coordinate geometry, sequences and series, trigonometry, exponentials and logarithms, numerical methods, differentiation, integration, statistical sampling, data presentation and interpretation, probability, statistical distributions, hypothesis testing, quantities and units in mechanics, vectors, kinematics, forces and Newton's Laws of Motion.

## LEARNING METHODS AND ASSESSMENT

Topics are taught through discussion and practise, using past paper questions to prepare for examinations.

Homework and independent learning tasks are set twice weekly and students are assessed after each unit of work covered.

Each exam at the end of Year 13 is equally weighted (100 marks) and is assessed by three 2 hour written examinations.



## CAREER OPPORTUNITIES

Mathematics is a highly valued qualification and is essential for many higher education courses and careers, including Engineering, Computer Science, Robotics, Pure and Applied Sciences, Medicine, Economics, Architecture, Accounting and Banking and Psychology.

# ADVANCED MATHS (CORE)

LEVEL **3**  
SUBJECT TITLE **ADVANCED  
MATHEMATICS (CORE)**  
AWARDING BODY **AQA**  
COURSE CODE **601/4945/0**

Contact: Miss Whitworth  
Email: [lwh@altrinchamcollege.com](mailto:lwh@altrinchamcollege.com)

## ENTRY REQUIREMENTS

Five GCSEs at grades 9-5 including English Language and Maths.

Grade 5 or above is required in GCSE Maths.

## COURSE CONTENT

Core Maths builds on GCSE Maths with a sharper focus on problem solving skills by considering and tackling mathematics in meaningful contexts.

## COURSE CONTENT

This is a one year course and is an ideal complement to other subjects offered at Altrincham College, especially Psychology, Geography, Biology, Chemistry, Computer Science and Business. Students have found that studying Core Maths gives them more confidence to better understand the mathematical requirements in their other courses.

The course teaches students more about 'real life' mathematics, such as mortgages, loans, VAT and taxation, etc, along with how to analyse and present data, which is a useful skill in many professions.

## LEARNING METHODS AND ASSESSMENT

Core Maths Students will be required to work independently, in groups and in pairs, with a lot of emphasis on problem solving. The qualification merits the same UCAS points as an AS level.

Pupils will be assessed by taking two papers at the end of the one year course:

**Paper one:** Analysis of data, personal finance, modelling and estimation.

**Paper two:** Critical analysis, the normal distribution, confidence intervals, correlation and regression.

This one year course is ideal for any student who has enjoyed GCSE Maths, achieved at Grade 5 in GCSE Maths and wants to continue studying maths alongside their A Levels.



## CAREER OPPORTUNITIES

Many students arrive at University or apprenticeships with unrealistic expectations of the mathematical demands of their studies. This course has been developed alongside employers, Universities and professional bodies as valuable preparation for higher education and employment.



# A LEVEL MEDIA STUDIES

**LEVEL** 3  
**SUBJECT TITLE** MEDIA STUDIES  
**AWARDING BODY** OCR  
**COURSE CODE** 603/2339/5

**Contact: Mr Mahmood**  
**Email: amd@altrinchamcollege.com**

## ENTRY REQUIREMENTS

Five GCSEs at grades 9-5 including English Language. If you completed a Creative and/or Media-related course at GCSE then you must have achieved a grade 6.

This specification provides a strong foundation for learners to progress to Higher Education and also equips learners for progression into the workplace.

## COURSE CONTENT

Students will study the following Media Disciplines: News, online media, advertising, marketing, music videos, radio, video games, TV and film. All of the above will be studied in relation to the key areas of the Theoretical Framework: Media Language, Media Audiences, Media Industries, Media Representation and Context. There is also a cross-media practical element to the course.

## LEARNING METHODS AND ASSESSMENT

OCR's A Level in Media Studies is a linear qualification with 70% external assessment by examination and 30% non-exam assessment (NEA). This qualification consists of two components that are externally assessed and one component that is assessed by the centre and externally moderated by OCR. Learners must take all three components to be awarded the OCR A Level in Media Studies.

There are 2 examinations at the end of Yr13: Paper 1 assesses students' knowledge on News, Online Media, Media Language and Media Representation, focusing on set products, as identified by the exam board.

Paper 2 assesses students' knowledge on Media Industries and Media Audiences in relation to the set products. This paper also focuses on an in-depth study of one episode of a contemporary English TV Drama and one non-English TV Drama. Some of the Set Products that will be focused on include: The Jungle Book (film), Stranger Things (TV), The Big Issue (magazine), Minecraft (video game), David Guetta – Titanium (music video) and many more.

Additionally, students will complete a Non-Exam Assessment that gives them the opportunity to work independently and develop expertise that builds on areas of study from elsewhere in the course. They will create a cross-media magazine product in response to a brief. The 'Making Media' component of the course allows students to create media products for an intended audience, by applying knowledge and understanding of the theoretical framework of media to communicate meaning.

## CAREER OPPORTUNITIES

Key transferable skills and knowledge developed by studying this course:

Analytical skills, Evaluative skills, Creativity, Industry practice, Research techniques, Interpreting audience data, Literacy, Social, cultural and historical contexts.

The potential career progression routes for this course are vast and wide-ranging, due to the number of disciplines within the media sector e.g TV, press, film, radio, video games, marketing etc.

Careers within each of these disciplines can be creative, technical, managerial, or within the marketing and legal teams for individual businesses and organisations.

1 in 3 job roles in the UK are within the Creative Media industry.



# A LEVEL PHYSICAL EDUCATION

**LEVEL** 3  
**SUBJECT TITLE** PHYSICAL EDUCATION  
**AWARDING BODY** AQA  
**COURSE CODE** 601/8633/1

**Contact:** Mrs Bow Butters  
**Email:** [jbb@altrinchamcollege.com](mailto:jbb@altrinchamcollege.com)

## ENTRY REQUIREMENTS

Five GCSEs at grades 9-5 including English Language, Maths and Science.  
A minimum of Grade 6 in GCSE PE is essential.  
Club-level standard practical performance within one selected sporting activity. You will also be required to attend a practical assessment prior to the start of the course.

## COURSE CONTENT

A-Level PE enables you to apply for higher education courses in sports science, sports management, healthcare, or exercise and health. It can also complement further study in subjects such as biology, human biology, physics, psychology, nutrition and sociology.

## LEARNING METHODS AND ASSESSMENT

Students will take two examinations for the A Level at the end of year 13:

### **Paper 1: Factors affecting participation in physical activity and sport.**

Applied anatomy and physiology; Skill acquisition; Sport and society.  
(worth 35% of A Level, 105 marks) (2hours)

### **Paper 2: Factors affecting optimal performance in physical activity and sport.**

Exercise physiology and biometrics; Sport psychology; Sport and society and technology in sport. (worth 35% of A Level, 105 marks) (2hours)

### **Non-exam assessment: Practical performance in physical activity and sport.**

Students will be assessed as a performer or coach in the full sided version of one activity.  
Plus: written/verbal analysis of performance. (90 marks) (30% of A Level)

## EXPECTATIONS OF STUDENTS:

Students must:

Have a keen interest in sport and be regularly involved in performing or coaching.

Want to develop knowledge and understanding of the scientific factors that underpin performance in physical activity and sport.

Want to analyse, evaluate and improve their own sporting performance.

Have the willingness to problem-solve in a range of practical and theoretical situations including the analysis of their own performance.

Have good communication, organisational and commitment to the course to complete coursework, examinations and practical aspects of the course.



## CAREER OPPORTUNITIES

A wide range of careers in sport including, nutritionist, physiologist, physiotherapist, teacher, fitness professional, sports development officer, outdoor education instructor, sports psychologist and sports coach. Additionally, there are close links with a range of subjects: A Level Biology, Psychology, Maths and Sociology.

# A LEVEL PHYSICS

**LEVEL** 3  
**SUBJECT TITLE** PHYSICS  
**AWARDING BODY** AQA  
**COURSE CODE** 601/4747/7

**Contact:** Miss Brickland  
**Email:** [sbd1@altrinchamcollege.com](mailto:sbd1@altrinchamcollege.com)

## ENTRY REQUIREMENTS

Five GCSEs at grades 9-5 including English Language and Maths.

Minimum grades of 6 in Maths GCSE, grade 6 in Physics GCSE, or grade 6 in Combined Science GCSEs.

## COURSE CONTENT

1- Measurements and their Uses, 2 - Particles and Radiation, 3 - Waves, 4 - Mechanics and Materials, 5 - Electricity, 6 - Further Mechanics and Thermal Physics, 7 - Fields and their Consequences, 8 - Nuclear Physics  
9 - One of: Astrophysics, Medical Physics, Engineering Physics, Turning Points or Electronics

## LEARNING METHODS AND ASSESSMENT

A Levels are externally assessed courses with examinations for all units at the end of Year 13.

The A level comprises of three examinations, each 2 hours long.

Paper 1 (units 1 - 6.1) and Paper 2 (units 6.2 - 8 plus assumed knowledge from 1 – 6) will each consist of short and long answers and 25 multiple choice questions (85 marks for each paper).

Paper 3 will consist of short and long answer questions on practical skills and data analysis (45 marks) and of short and long answer questions on the optional topic (35 marks).

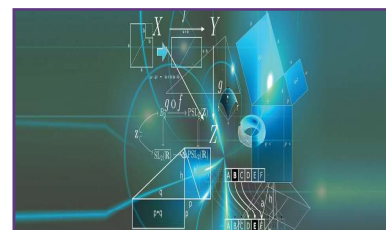
## PRACTICAL, RESEARCH AND INVESTIGATIVE SKILLS

Students will complete 12 core practical assignments. Questions relating to these activities will comprise 15% of the marks available for the A-Level.

Students will need to work safely, produce valid results and learn to present and evaluate data appropriately. Practical activities will provide evidence for the Science Practical Endorsement which requires competence to be shown in a list of key techniques. The Science Practical Endorsement will be assessed as a Pass or Fail. While not contributing to the qualification grade, the result will appear on the student's exam certificate.

## CAREER OPPORTUNITIES

This qualification is an excellent foundation for progression in Physics and related courses at University and as a basis for careers in Engineering, Finance, Research and Development and Teaching.



# A LEVEL POLITICS

**LEVEL** 3  
**SUBJECT TITLE** POLITICS  
**AWARDING BODY** EDEXCEL  
**COURSE CODE** 603/1223/3

**Contact:** Mrs Acharya  
**Email:** mah@altrinchamcollege.com

## ENTRY REQUIREMENTS

Five GCSEs at grades 9-5 including English Language and Maths.  
Grade 6 in GCSE Religious Studies or History is preferred.

## COURSE CONTENT

**Component 1:** UK Politics  
**Component 2:** UK Government  
**Component 3:** Comparative Politics

## LEARNING METHODS AND ASSESSMENT

A Levels are externally assessed courses with examinations for all components at the end of Year 13.

The A Level comprises of three examinations, each 2 hours long.

**Component 1: UK Politics:** 1. Political Participation, students will study democracy and participation, political parties, electoral systems, voting behaviour and the media. 2. Core Political Ideas, students will study conservatism, liberalism, socialism.

**Component 2: UK Government:** 1. UK Government, students will study the constitution, parliament, Prime Minister and executive, relationships between the branches. 2. Non-core political ideas, students will study one idea from the following: anarchism, ecologism, feminism, multiculturalism, nationalism.

**Component 3: Comparative Politics** - Global, students will study sovereignty and globalisation, global governance: political and economic, global governance: human rights and environmental, power and developments, regionalism and the European Union, comparative theories.

## EXPECTATIONS OF STUDENTS:

In addition to showing a keen interest in the subject, each student will be expected to complete 5 hours of independent study on a weekly basis through a variety of media e.g. watching Question Time, reading newspapers and so on.

## CAREER OPPORTUNITIES

As with any subject in the area of Humanities, students acquire a great range of skills, such as analysis, interpretation, critical thinking and the ability to produce extended evaluative pieces of writing. These are skills that will prepare students well for a range of higher education courses and, beyond that, in employment generally.  
Government and Politics is an established, widely recognised A Level with universities, and provides an excellent base for careers in Law, Journalism and the media, Business and Management, Civil Service and Local Government.



# A LEVEL PSYCHOLOGY

**LEVEL** 3  
**SUBJECT TITLE** PSYCHOLOGY  
**AWARDING BODY** EDEXCEL  
**COURSE CODE** 601/5573/5

**Contact:** Mrs Ledward  
**Email:** cld@altrinchamcollege.com

## ENTRY REQUIREMENTS

Five GCSEs at grades 9-5 including English Language, Maths and Science.  
Grade 6 in English Language, Science and Maths is preferred.

## COURSE CONTENT

Year 1: Students will learn about four major approaches to Psychology: Social Psychology, Biological Psychology, Cognitive Psychology and Learning Theories  
Year 2: Students will learn about Clinical Psychology and Criminological Psychology, as well as Psychological Skills and wider issues and debates across psychology.

## LEARNING METHODS AND ASSESSMENT

In each topic, students will learn about the key features and applications of the approach including important studies related to that topic, and also find out how research is conducted in that area of Psychology. All students will learn to use maths skills and statistical tests to help interpret data collected in assessed practical investigations and be expected to conduct interviews, questionnaires, experiments and observations.

Students will be required to form hypotheses and record results in a variety of ways, such as reports, graphs and tables and use these results to reach a conclusion. A Level students will also be required to consider issues and debates from across all topics within the Psychological Skills unit. Students are directed to extended reading and research to develop their skills of evaluation and extended writing.

Paper 1 Foundations in psychology – 2 hours (35% of the A Level qualification)

Paper 2 Applications of psychology – 2 hours (35% of the A Level qualification)

Paper 3 Psychological Skills – 2 hours (30% of the A Level qualification)



## EXPECTATIONS OF STUDENTS

Students need to have a real interest in people's behaviour and how this can be explained. They must be able to learn independently and be able to work to deadlines. Good maths and science skills will aid students in analysis, and they are expected to produce extended essays that draw from, and develop, their scientific thinking.

Psychology provides many opportunities to develop skills in assessing debates and arguments. You will need to: be willing to have your opinions and values challenged, be willing to listen to and take on board new ideas and novel arguments, be able to see both sides of an issue and not reject one side simply because you initially believe it is wrong.

## CAREER OPPORTUNITIES

The following sectors (to name but a few) value Psychology as a qualification: Clinical Psychology, Education, Business and Management, sport and coaching, allied medical professions.

# A LEVEL RELIGIOUS STUDIES

**LEVEL** 3  
**SUBJECT TITLE** RELIGIOUS STUDIES  
**AWARDING BODY** OCR  
**COURSE CODE** 601/8868/6

**Contact:** Mrs Acharya  
**Email:** mah@altrinhamcollege.com

## ENTRY REQUIREMENTS

Five GCSEs at grades 9-5 including English Language and Maths.  
Grade 6 in GCSE Religious Studies or History is preferred.

## COURSE CONTENT

Component 1: Philosophy of Religion  
Component 2: Religion and Ethics  
Component 3: Developments in Buddhist Thought

## LEARNING METHODS AND ASSESSMENT

A Levels are externally assessed courses with examinations for all components at the end of Year 13. The A Level comprises of three examinations, each 2 hours long.

**Component 1: *Philosophy of Religion.*** Students study philosophical language and thought, and issues and questions raised by belief:

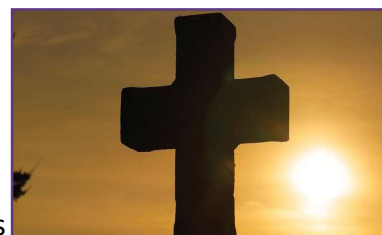
- Ancient philosophical influences
- The nature of the soul, mind and body
- Arguments about the existence or non-existence of God
- The nature and impact of religious experience
- The challenge for religious belief of the problem of evil
- Ideas about the nature of God
- Issues in religious language

**Component 2: *Religion and Ethics.*** Students explore key concepts and the works of influential thinkers, ethical theories and their application:

- Normative ethical theories
- The application of ethical theory to two contemporary issues of importance
- Ethical language and thought
- Debates surrounding the significant idea of conscience
- Sexual ethics and the influence on ethical thought of developments in religious beliefs

**Component 3: *Developments in Buddhist Thought.*** Students explore Buddhism thought systematically, including:

- Religious beliefs, values and teachings, their interconnections and how they vary historically and in the contemporary world
- Sources of religious wisdom and authority
- Practices which shape and express religious identity, and how these vary within a tradition
- Significant social and historical developments in theology and religious thought



## EXPECTATIONS OF STUDENTS

In addition to showing a keen interest in the subject, each student will be expected to complete 5 hours of independent study on a weekly basis through a variety of media e.g. watching *The Story of God* with Morgan Freeman, listening to podcasts such as *In Our Time* and *The RE Podcast*, reading newspapers and so on.

## CAREER OPPORTUNITIES

As with any subject in the area of Humanities, students acquire a great range of skills, such as analysis, interpretation, critical thinking and the ability to produce extended evaluative pieces of writing. Religious Studies is an established, widely recognised A Level with universities, and provides an excellent base for careers including Law, Journalism and the media, Business and Management, Civil Service and Local Government as well as medicine.

# A LEVEL SOCIOLOGY

**LEVEL** 3  
**SUBJECT TITLE** SOCIOLOGY  
**AWARDING BODY** OCR  
**COURSE CODE** 601/3997/3

**Contact:** Mrs Ledward  
**Email:** cld@altrinchamcollege.com

## ENTRY REQUIREMENTS

Five GCSEs at grades 9-5 including English Language, English Literature and Maths.  
Grade 6 in English Language and English Literature is preferred.

## COURSE CONTENT

Sociology is the scientific study of people in society. It uses various methods of empirical investigation to try and explain why different people behave in different ways and how our lives are shaped by factors such as our social class, gender and ethnicity. Sociology students are expected to think critically, and make judgements based on sociological evidence and not "common-sense" opinions, assumptions or stereotypes.

## LEARNING METHODS AND ASSESSMENT

Sociology is taught using a variety of methods and will enable you to understand the inter-relationships between individuals, groups, institutions and societies; critically analyse sources of information; organise and communicate your knowledge in an effective and creative way; and reach balanced judgements.

The A Level course comprises of three assessment units which have a mixture of short, medium and extended written questions, some of which are based on source material. Skills in extended essay writing and analysis are developed throughout the course.

Year 1 will include the following examination units: Socialisation, Culture and Identity (including youth subcultures); Researching and Understanding Social Inequalities

Year 2 will include: Globalisation and the Digital World; Crime and Deviance

All examinations will take place at the end of Year 13, with three exams in total.



## EXPECTATIONS OF STUDENTS

Students must have a genuine interest in social issues and why British society is as it is. Students should keep up to date with current affairs and society. Students are expected to participate fully in lessons and be willing to discuss their ideas and opinions with others.

## CAREER OPPORTUNITIES

The course will help you develop skills, understanding and knowledge that employers across a variety of industries are looking for. The course will also help you to develop the skills of research, essay writing, independent learning and also strong critical thinking which will be an asset at University. Many students progress on to jobs in the Public Sector and Policy Making, Government Agencies, Media and Journalism, Education and the Criminal Justice Sector.

# BTEC DIPLOMA ART & DESIGN (FASHION & CLOTHING)

**LEVEL** 3  
**SUBJECT TITLE** ART & DESIGN  
(FASHION & CLOTHING)  
**A-LEVEL EQUIVALENT** 2 A-LEVELS  
**AWARDING BODY** BTEC  
**COURSE CODE** 603/0447/9

**Contact:** Mrs Woods  
**Email:** [vfh@altrininchamcollege.com](mailto:vfh@altrininchamcollege.com)

## ENTRY REQUIREMENTS

Five GCSEs at grades 9-5 including English Language, Maths and Art & Design/Textiles (and a strong portfolio of artwork). Minimum Grade 5 for the Art course completed in Year 11 (Textiles/Art & Design/Graphics/Creative Media).

## COURSE CONTENT

This is a highly practical course which offers each student the opportunity to develop a very exciting and personalised portfolio consisting of Art & Design projects in Fashion and clothing.

## COURSE CONTENT

The course is structured around 8 units which students must complete over the 2 years.

The qualification provides the knowledge, understanding and skills that will prepare students for further study or training. In addition to the creative sector-specific content, the requirements of the qualification mean that students develop the transferable and higher-order skills that are highly regarded by higher education and employers. For example, critical and contextual studies develop students' ability to research and analyse art and design works by other practitioners, and to apply their findings to their practical projects.

The 8 Mandatory Units are:

- Unit 1 - Visual Recording & Communication
- Unit 2 - Critical & Contextual Studies in Art & Design
- Unit 3 - The Creative Process
- Unit 4 - Materials Techniques & Processes in Art & Design
- Unit 5 - Developing an Art & Design Portfolio
- Unit 7 - Developing and Realising Creative Intentions
- Unit 14 - Textile Materials, Techniques and Processes
- Unit 15 - Fashion Materials, Techniques and Processes



## LEARNING METHODS AND ASSESSMENT

The course is structured around 8 units which students must complete over the 2 years.

Units will be assessed on an on-going basis throughout the 2 years so that students are fully aware of their own grades and targets.

The course is graded: Distinction\*, Distinction, Merit, Pass

The final grade is broadly equivalent to 2 A Levels.

There will be appropriate enrichment activities and educational and resource finding visits organised throughout the 2 years to enhance student learning.



## EXPECTATIONS OF STUDENTS

Students must have a genuine interest in the world of Fashion and Clothing. They must also invest in materials and equipment needed for the course.

## CAREER OPPORTUNITIES

Designer, Stylist, Visual Merchandiser, Fashion Promoter, Fashion Illustrator, Costumier, Pattern Cutter, Garment Technologist, Fashion Buyer, Fashion Marketing, Production Manager, Merchandiser, Retail Management, Quality Control, Fashion Editor, Textile Designer, Knitwear Designer.

The Fashion & Clothing specialised course falls under BTEC vocational Art & Design National Diploma qualification and is recognised by universities and employers for the rigour of tested and moderated unit work.



# OCR EXTENDED CERTIFICATE BUSINESS

**LEVEL** 3  
**SUBJECT TITLE** BUSINESS  
**A-LEVEL EQUIVALENT** 1 A-LEVEL  
**AWARDING BODY** OCR  
**COURSE CODE** 601/7699/4

**Contact:** Mr Mahmood  
**Email:** amd@altrinhamcollege.com

## ENTRY REQUIREMENTS

Five GCSEs at grades 9-5 including English Language and Maths.

If you have completed Business at GCSE (minimum grade 5) this would be an advantage, but is not essential.

## COURSE CONTENT

The Extended Certificate is a two year qualification designed to be taken alongside other A-Level subjects. This qualification offers students a valuable, vocational insight into the world of business and different types of industries, with a range of both practical and theoretical

## COURSE CONTENT

Students will complete a variety of engaging projects that are geared towards providing the relevant skills for a career in Business.

Units include: Working in Business, Business Decisions, Accounting Concepts, Project Management, Business Events, Customer Communication and The Business Environment.

Students will learn and develop a range of business skills as well as increasing their understanding of the processes involved in running a business.

## LEARNING METHODS AND ASSESSMENT

- The course will be structured around internally and externally assessed unit assignments which will allow students to make realistic media products using professional facilities and resources.
- This is a 2 year course.
- This course is 50% externally assessed and 50% internally assessed.
- Internally assessed units will be assessed by the subject teacher at regular intervals in order to monitor the progress made by students.
- Externally assessed units will be assessed by the exam board but delivered by experienced teaching staff.
- The course is graded: Distinction\*, Distinction, Merit, Pass.
- The final grade for the Extended Certificate is equivalent to 1 A-Level and carries the same weighting of UCAS points per A\*-E grade.



## CAREER OPPORTUNITIES

Students can use this qualification when combined with other Level 3 qualifications to progress to University to study a Degree, Higher National Diploma or other professional development programmes. Some may enter a specialist area of employment.

# OCR EXTENDED CERTIFICATE SPORT & PHYSICAL ACTIVITY

**LEVEL** 3  
**SUBJECT TITLE** **SPORT & PHYSICAL  
ACTIVITY**  
**A-LEVEL EQUIVALENT** 1 A-LEVEL  
**AWARDING BODY** OCR  
**COURSE CODE** 601/7093/1

**Contact: Mrs Bow Butters**  
**Email: [jbb@altrinchamcollege.com](mailto:jbb@altrinchamcollege.com)**

## ENTRY REQUIREMENTS

Five GCSEs at grades 9-5 including English Language, Maths and Science. A minimum Grade 5 in GCSE P.E. is desirable but not essential. You will also be required to attend a practical assessment prior to the start of the course.

## COURSE CONTENT

This 5 unit course extends and deepens the specialist work-related focus from the GCSE PE, and is equivalent to one A-Level. This course can be combined with a further two subjects.

## COURSE CONTENT

This course prepares students directly for employment and it is suitable for those who wish to complement their A-Level programme and enter a particular specialist area of work or University.

The Cambridge Technical Extended Certificate in Sport consists of three Mandatory units plus two optional units.

Mandatory units are:

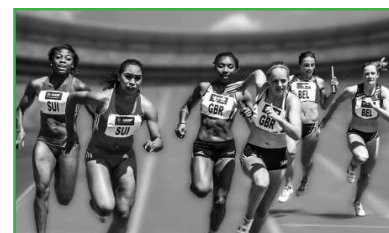
- Unit 1 - Anatomy & Physiology (Written exam – assessed externally)
- Unit 2 – Sports Coaching and Activity Leadership
- Unit 3 – Sports Organisation and Development (Written exam – assessed externally)

The optional units are: Unit 8 - Organisation of Sports Events and Unit 18 - Practical Skills in Sport and Physical Activities

## LEARNING METHODS AND ASSESSMENT

The course is both theoretical and practical. Assessment is through written exams, written assignments, presentations and practical performance.

The course is assessed by using Pass, Merit and Distinction criteria, each of which carry a points weighting equal to that of 1 A-Level. Cambridge Technical grades carry equal University points to that of A-Levels and, when combined with other Level 3 Qualifications, can be used for entry onto Degree courses at University.



## LINKS WITH OTHER SUBJECTS

The course has a large and varied subject content and is ideal for students who also wish to study any of the following subjects: English, Biology, Business, Law and Psychology.

## CAREER OPPORTUNITIES

This qualification is relevant to a large number of University courses and employment areas, including: Teaching, Coaching, Sports Centre Management, Leisure Services, Sports Development, Sports Nutrition, Armed Services and the Police.

# BTEC EXTENDED CERTIFICATE ART & DESIGN

**LEVEL** 3  
**SUBJECT TITLE** ART & DESIGN  
**A-LEVEL EQUIVALENT** 1 A-LEVEL  
**AWARDING BODY** BTEC  
**COURSE CODE** 601/7228/9

**Contact:** Mr Miranda  
**Email:** rma@altrinchamcollege.com

## ENTRY REQUIREMENTS

Five GCSEs at grades 9-5 including English Language and Maths and a strong portfolio of art work. If you completed GCSE Art & Design, Graphics or Textiles you must have achieved a minimum of a Grade 5.

## COURSE CONTENT

This highly practical course is structured around 4 practical units (3 mandatory and 1 optional), which is completed over two years. The course offers each student the opportunity to develop an exciting and very personalised portfolio of work whilst still experimenting and experiencing skills in areas ranging from Fine Art and 3D to Textiles and Graphics.

## COURSE CONTENT

The qualification is intended to carry UCAS points, and is recognised by higher education providers, as contributing to meeting admission requirements for many courses, if taken alongside other Level 3 qualifications as part of a two-year programme of learning.

There are three Mandatory units:

- Unit 1: Visual Recording and Communication (Externally set and assessed)
- Unit 2: Critical and Contextual Studies in Art and Design (Externally set and assessed)
- Unit 3: The Creative Process (Internally set and assessed)

And one Optional unit:

- Unit 12: Fine Art Materials, Techniques and Processes (Internally set and assessed)

This is a diverse unit encompassing a vast array of 2D, 3D and digital materials, techniques and processes such as painting, printmaking, sculpture, installation, video and photography. These materials and techniques will be used individually, and in combination, to create both conceptual and more traditional pieces.



## LEARNING METHODS AND ASSESSMENT

- Units will be assessed through an on-going process throughout the two years so that students are fully aware of their grades and targets with opportunities to achieve Distinction grades
- The course is graded: Distinction\* (A\*), Distinction (A), Merit (B), Pass (C)
- This final grade is the equivalent to 1 A-Level

There will be appropriate enrichment activities and educational and resource finding visits organised throughout the two years to enhance student learning.

## CAREER OPPORTUNITIES

Students can use this qualification to progress to University to study a Higher Education Foundation Degree, Higher National Diploma or other professional development programme. Some may enter a specialist area of employment. Depending on the other qualifications learners have taken, they can progress to a degree programme from a range of programmes in the art and design sector.

Many of our past students who took academic subjects such as Law, English and Computer Science alongside the Extended Certificate in Art and Design, have gained places at university for subjects such as Graphics, Fine Art, Interior Design and Fashion, as well as Law, English, Computer Programming and other degrees. Many students have also taken up other careers either linked to the creative industries and/or careers in different areas of employment where their knowledge and expertise in the arts has helped them a great deal.

# BTEC EXTENDED CERTIFICATE MUSIC PERFORMANCE

**LEVEL** 3  
**SUBJECT TITLE** MUSIC  
**PERFORMANCE**  
**A-LEVEL EQUIVALENT** 1 A-LEVEL  
**AWARDING BODY** BTEC  
**COURSE CODE** 601/7090/6

**Contact:** Mr Madden  
**Email:** bmn@altrinhamcollege.com

## ENTRY REQUIREMENTS

Five GCSEs at grades 9-5 including English Language and Maths.

Grade 5 or above is required in GCSE Music, or Grade 4/5 standard on your instrument/voice. You should also have practical experience of performing and composing.

## COURSE CONTENT

An extremely hands-on subject that develops your skills as a musician and offers you more experience going into the modern music industry

This course will allow you to immerse yourself in music and express yourself as a performer and/or composer. It will give you an understanding of the varied employment opportunities in the music industry, as well as practical experiences and performance opportunities to be proud of.

Our teaching at Altrinham College is carefully adapted to suit your own particular interests, abilities and aspirations - both in **what** you study and in **how** you are assessed.

## COURSE CONTENT

There are 3 mandatory units: Music Performance, Music Composition and Professional Practice in the Music Industry. You will then choose from a range of optional units to suit your musical tastes and abilities. These include solo and ensemble performance, composition, arranging music and music theory.

You will learn in a range of styles including practical lessons: rehearsing, composing, forming bands and groups, trips to studios, events and concerts.

## HOW WILL I BE ASSESSED?

Some units are externally assessed, while the others are internally assessed and graded Pass, Merit or Distinction.

A variety of methods are used including presentations, recordings, written projects, exams, and performances.

## CAREER OPPORTUNITIES

Music students go on to many different careers within and beyond the world of music. The skills required to be a good musician (creativity, listening, perseverance, team skills) are greatly valued by further and higher education courses, and by employers in all walks of life.

We will encourage you to join or help lead one of our school music ensembles or choirs, and/or form your own band. You will have the opportunity to take part in performances in a range of venues, giving you musical experiences you will remember and cherish for the rest of your life!



# THE APPLICATION

You can now apply electronically. Scan the QR code to access the online application form. Alternatively, you can download an application form from the school website.

Remember to select just ONE pathway.



**Application Deadline:** Thursday 12th January 2023

**Internal applicants:** Apply online OR return your paper application to your Form Tutor or Sixth Form Reception.

**External applicants:** Apply online OR post your paper application to school. Applications must be accompanied with a current school reference.





AltrinchamCollege



@acsixthform



@AltrinchamCOA